

# BRAFA 2024

## Press kit



**Gokelaere  
& Robinson®**

**BRAFA**  
ART FAIR



## BRAFA 2024

### Gokelaere & Robinson | Booth 37

Gokelaere & Robinson is pleased to announce its 8th participation to BRAFA.

The 2024 edition will take place from January 28th to February 4th at Brussels Expo, Place de Belgique 1, 1020 Brussels, Belgium.

This year will be dedicated to the best of European, Brazilian and North American 20th century design. Our booth will showcase refined pieces of furniture and decorative objects created by majors designers, including works by Paul Evans, Ado Chale, Gio Ponti, Jorge Zalszupin and Joaquim Tenreiro.

High quality visuals are available upon request at [info@gokelaer robinson.com](mailto:info@gokelaer robinson.com)

**Stanislas Gokelaere**  
+32 475 35 95 75  
[gokelaere@gokelaer robinson.com](mailto:gokelaere@gokelaer robinson.com)

**Aymeric Miouze**  
+33 6 38 82 18 52  
[paris@gokelaer robinson.com](mailto:paris@gokelaer robinson.com)

Knokke  
Golvenstraat 6  
B- 8300 Knokke

Paris  
Rue de Penthièvre 34  
F- 75008 Paris

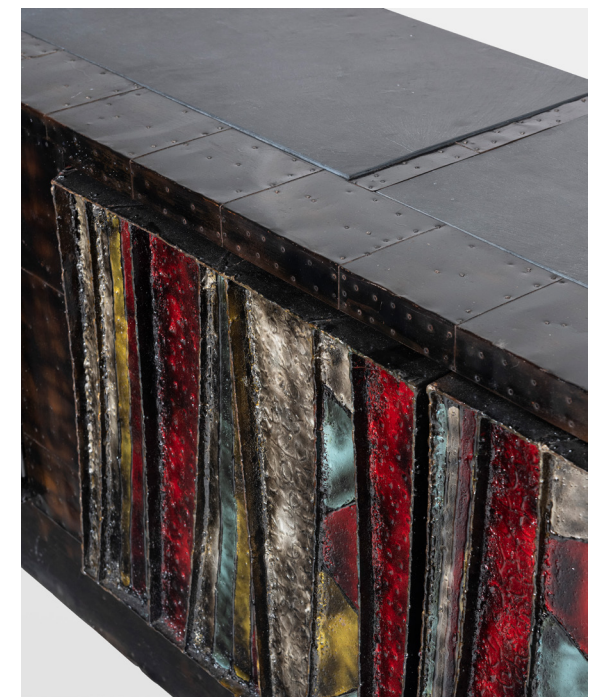
# Highlights



**Paul Evans**  
1937-1981 | USA

**Wall console**  
1970

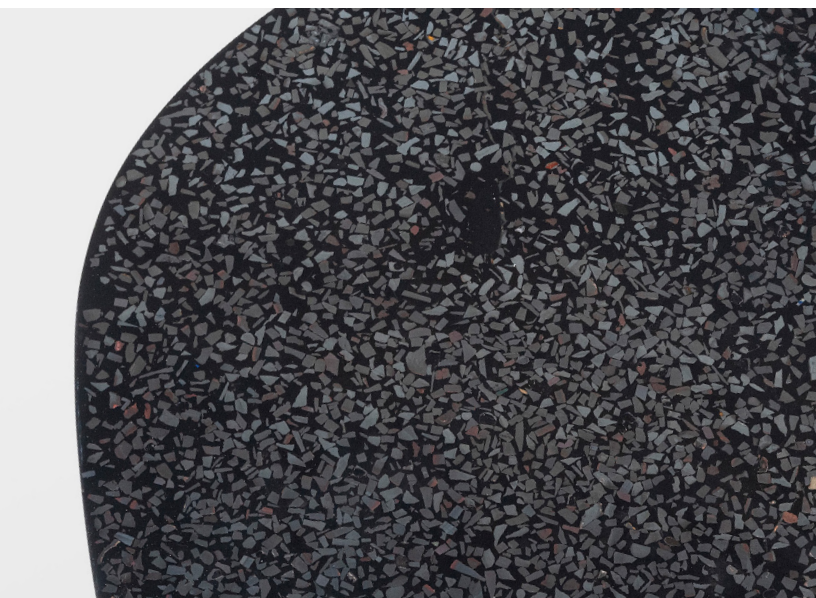
Torch-cut, welded, polychromed and patinated steel, cleft slate, enameled and papered wood  
79 x 244 x 55 cm  
31 1/8 x 96 x 21 5/8 in







**Ado Chale** Coffee Table  
Born in 1928 | France  
1962  
Brass, painted metal  
44 x 18 cm  
17 3/8 x 7 1/8 in



**Hans Christian Hansen & Viggo Jørgensen** Pair of armchairs  
1901-1978 & 1902-1981  
Denmark  
1936  
Oak and fabric  
92 x 80 x 80 cm  
36 1/4 x 31 1/2 x 31 1/2 in  
Manufactured by Johannes Hansen, Denmark



These armchairs are among the rarest furniture designed by Danish architects and designers Hans-Christian Hansen and Viggo Jørgensen. After the Stockholm Exhibition of 1930, many Danish architects and designers experimented with previously unseen shapes to create new forms of upholstered furniture. Hans-Christian Hansen and Viggo Jørgensen abandoned the austere, sharp edges of the functional school and favored organic forms and curved lines to ensure comfort. Along with the matching sofa, these armchairs are unique and were exhibited at the Copenhagen Cabinetmakers Guild in 1936 and at the Exposition Universelle in Paris in 1937.





## Jorge Zalszupin

1922-2020 | Brazil

## Sideboard

ca. 1960

Sideboard, ca. 1960  
Jacaranda  
72 x 250 x 40 cm  
28 3/8 x 98 3/8 x 15 3/4 in  
Manufactured by L'Atelier



## Jorge Zalszupin

1922-2020 | Brazil

## 'Guanabara' table

1959

Rosewood, concrete, leather  
74 x 452 x 132 cm  
29 1/8 x 178 x 52 in  
Manufactured by L'Atelier

Originally designed for a conference room, this table comes from the offices of Vulcabras, a Brazilian company founded in 1952 that designs sporting goods. The label of the company is attached to one of the bases. This table can easily fit 18 persons and can as well be used in domestic spaces.

Strong and elegant, the Guanabara table is an emblematic design by Jorge Zalszupin. The name is a reference to the Baia de Guanabara, one of the

most iconic sceneries in Rio de Janeiro. Exceptional by its dimensions, this stunning table presents a 4.5 meters long curved rectangular top. It is supported by a strong metal structure placed on two solid concrete biomorphic bases covered with brown leather. The wooden tabletop is composed by a combination of rectangular pieces of Jacaranda of different colors that creates a patchwork-like composition. This collage technique gives the entire table an extremely vibrant quality.

# Gallery



## Gokelaere & Robinson®

Booth 37

Gokelaere & Robinson is an international gallery dedicated to the promotion of historic designers and architects of the 20th century. Born from the passion for design of Stanislas Gokelaere, the gallery maintains permanent exhibition spaces in Belgium (Knokke) and in Paris (8th arrondissement).

Gokelaere & Robinson participates in several major art fairs worldwide, staging refined craftsmanship and timeless creations. Their robust exhibition program includes mainly Scandinavian, American, French, Brazilian and Italian designers from 1940's to 1980's.

The gallery was established in Belgium in 2014. Originally located in Brussels, Gokelaere & Robinson is present since 2019 in Knokke, in a centrally located 250 sqm space.

In 2021, a new space was inaugurated in Paris. The gallery is located in the Matignon district, the new art center of the French capital. It benefits from the immediate proximity of major international galleries, auction houses and museums.

### Paris

34, rue de Penthièvre | 75008

T + 33 1 44 07 04 56

paris@gokelaererobinson.com

### Knokke

Golvenstraat 6 | 8300

T + 32 50 658 388

knokke@gokelaererobinson.com

# Fair

## BRAFA ART FAIR

January 28 - February 4, 2024

Brussels Expo, Place de Belgique 1  
1020 Brussels, Belgium

### Exclusive Saturday

Samedi 27 janvier 2024

11h00 - 19h00

### Public Days

Dimanche 28 janvier 2024

11h00 - 19h00

Lundi 29 janvier 2024

11h00 - 19h00

Mardi 30 janvier 2024

11h00 - 19h00

Mercredi 31 janvier 2024

11h00 - 19h00

Jeudi 1 février 2024

11h00 - 22h00

Vendredi 2 février 2024

11h00 - 19h00

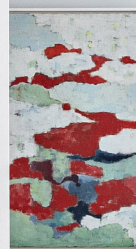
Samedi 3 février 2024

11h00 - 19h00

Dimanche 4 février 2024

11h00 - 19h00





**Gokelaere  
& Robinson**  
[www.gokelaerobinson.com](http://www.gokelaerobinson.com)